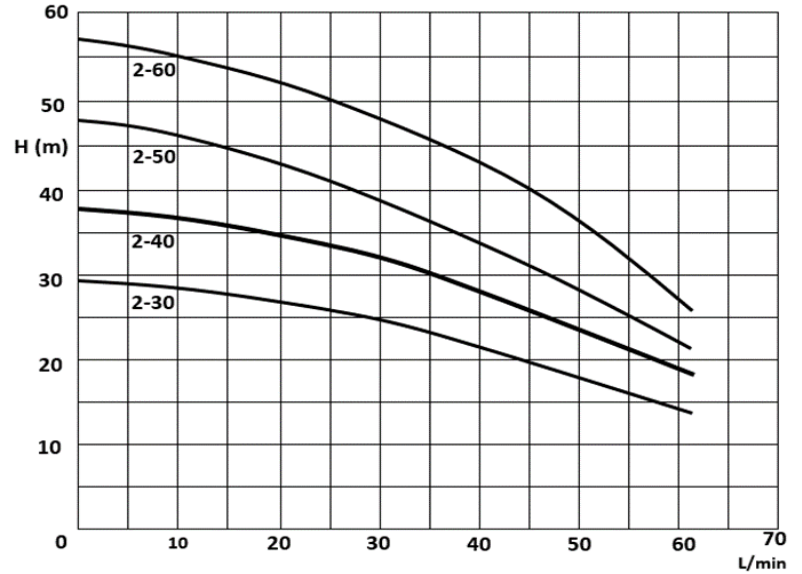


Technical Data

Horizontal Multistage Pumps



CSS2-30, 2-40, 2-50, 2-60



Description:

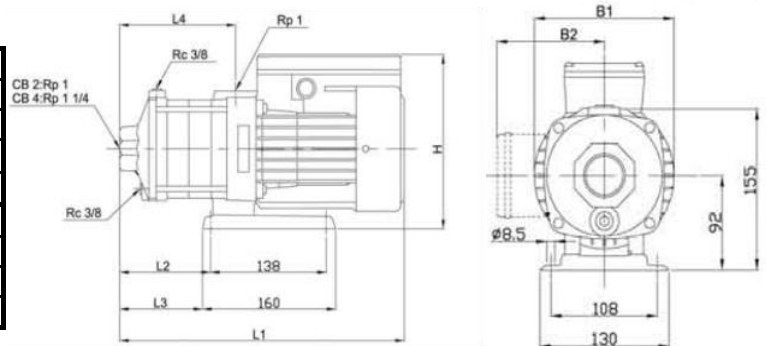
These pumps feature excellent hydraulic performance, are capable of generating a high pressure with minimal power consumption a very low noise while running, and are particularly suited for use in domestic, light civil and industrial applications. It is recommended that these pumps are used to carry only chemically pure liquids (water) free of foreign matters, with a temperature not higher than 90°C. Maximum ambient temperature of 50°C. Stage assembly's including diffuser and impellers made of 304 grade stainless steel, pump ends from 304 Stainless steel, all elastomers in EPDM, and a high quality silicon carbon mechanical seal. Pump end shaft in high grade 431 stainless steel. Electric motors: Totally enclosed fan cooled, squirrel-cage (TEFC), IP54 safety class. F insulation. Single phase motors fitted with thermostat-controlled safety micro switches to avoid undesirable damages to the motor.

Specifications:

Model	Power					Speed rpm	Suction Max. (m)	Operating pressure Max. (kpa)	Package Dimensions (mm) & Weight (Gross)			
	HP	kW	V	µf	A				L	W	H	Kg
CSS2-30	0.5	0.37	240	10	2.3	2850	8	300	360	260	390	12.2
CSS2-40	0.5	0.37	240	10	2.6	2850	8	380	410	260	390	12.6
CSS2-50	0.75	0.55	240	16	3.2	2850	8	480	500	260	390	13.1
CSS2-60	0.75	0.55	240	16	3.7	2850	8	580	510	260	390	13.5

Construction:

Pump	Pump Body	AISI 304
	Impeller	AISI 304
	Mech. Seal	SiC / Carbon
	O-Ring	EPDM
	Pump Shaft	AISI 413
Motor	Motor Housing	Aluminium
	Insulation	Class F
	Protection	IP44
	Cooling	External (TEFC)



Model	Dimensions (mm)							Inlet	Outlet
	L1	L2	L3	L4	B1	B2	H		
CSS2-30	327	93	63	119	141	127	228	25	25
CSS2-40	345	111	81	137	141	127	228	25	25
CSS2-50	363	129	99	155	141	127	228	25	25
CSS2-60	381	147	117	173	141	127	228	25	25